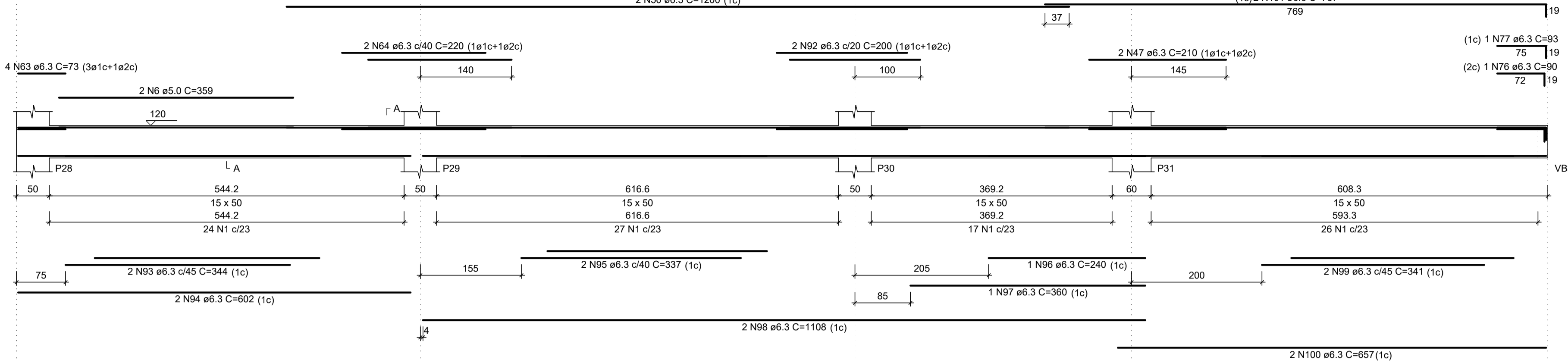


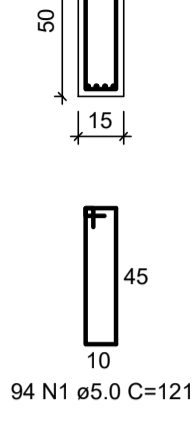
**VB9**

ESC 1:50



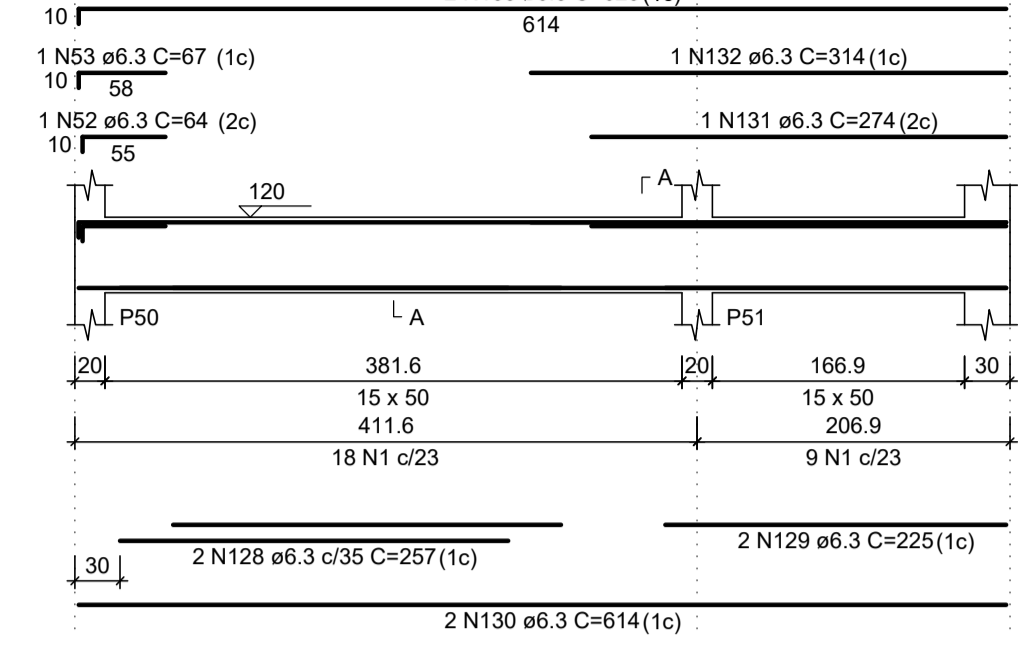
**SEÇÃO A-A**

ESC 1:25



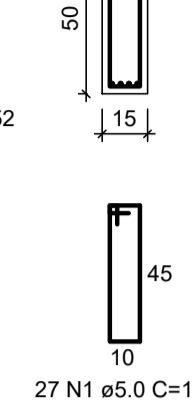
**VB14**

ESC 1:50



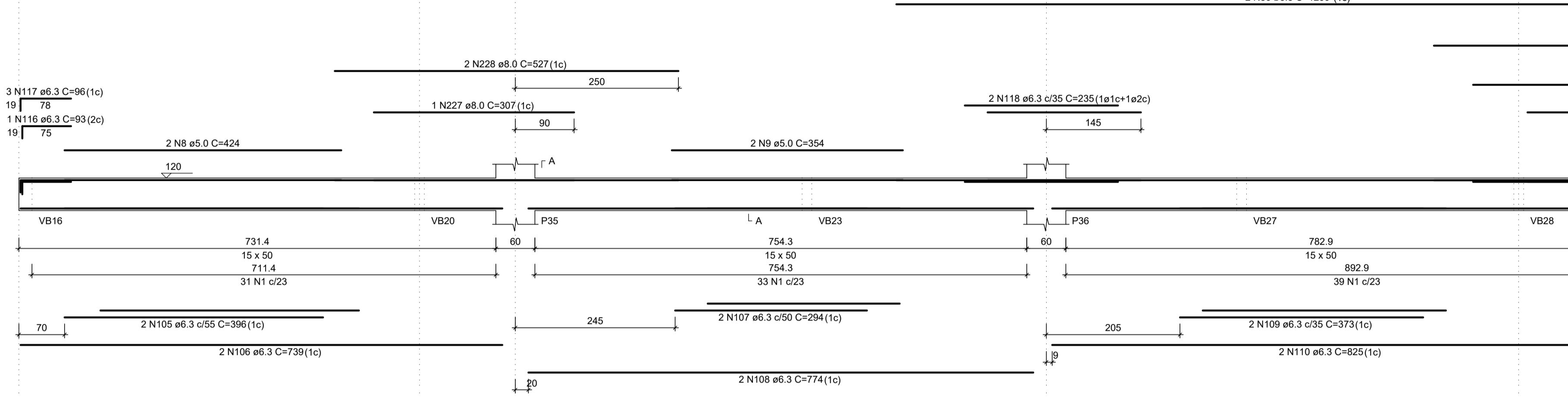
**SEÇÃO A-A**

ESC 1:25



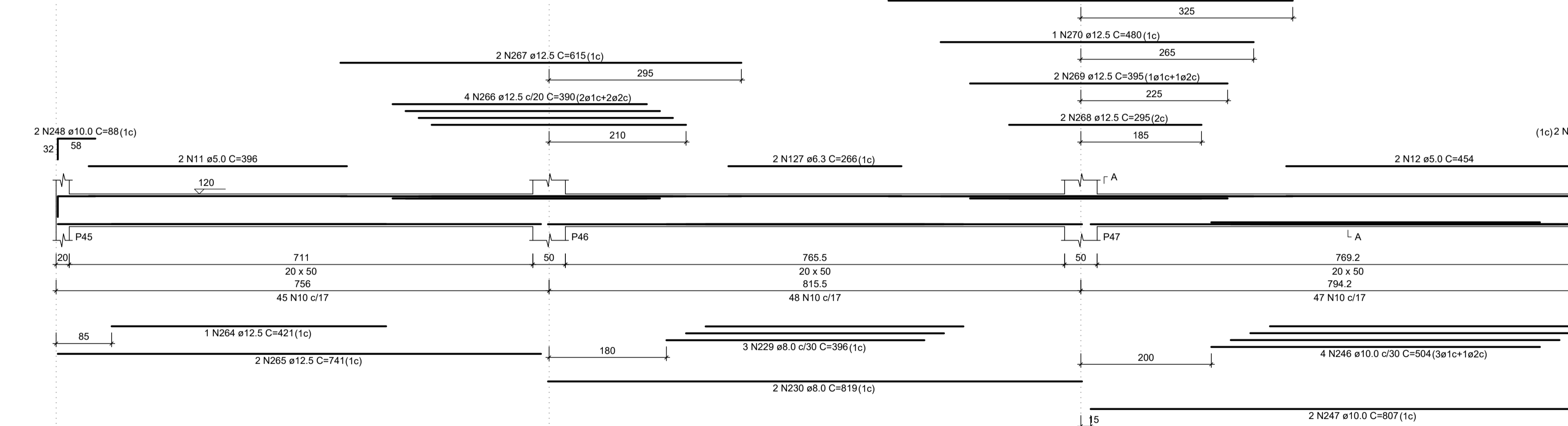
**VB11**

ESC 1:50



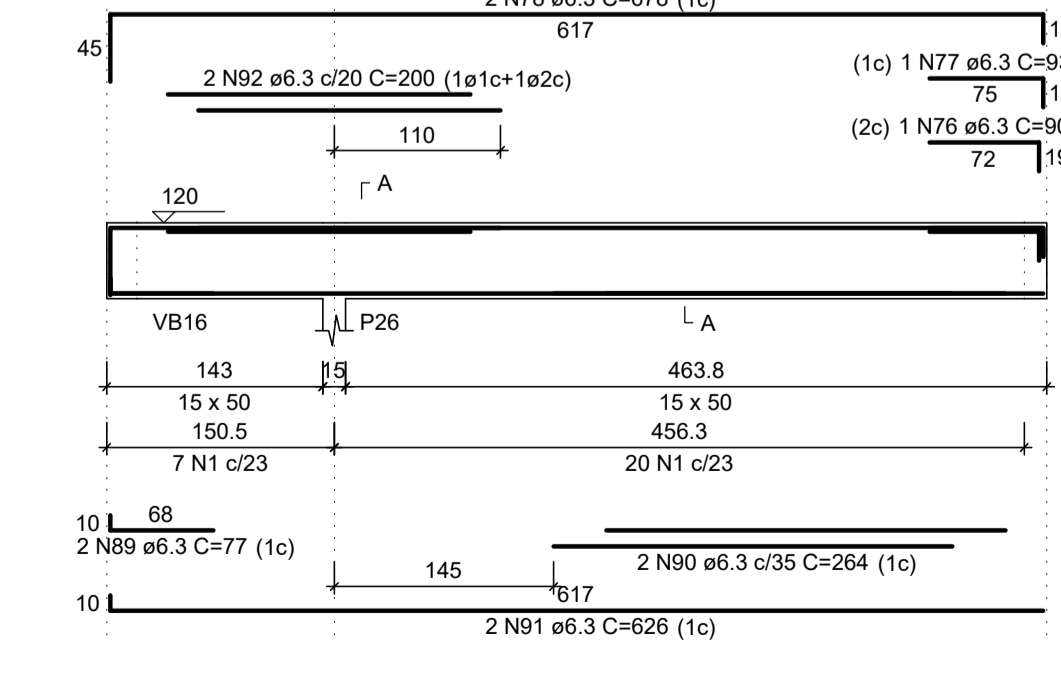
**VB13**

ESC 1:50



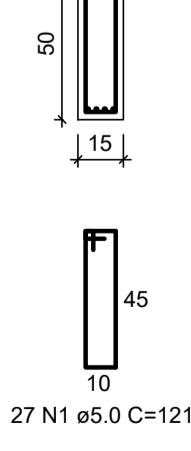
**VB8**

ESC 1:50



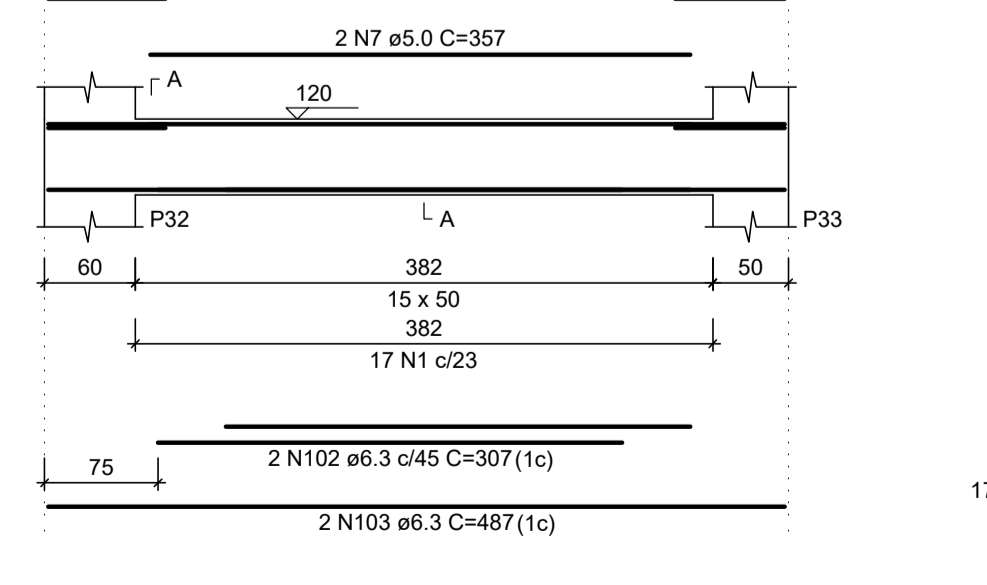
**SEÇÃO A-A**

ESC 1:25



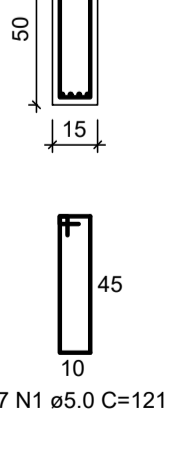
**VB10**

ESC 1:50



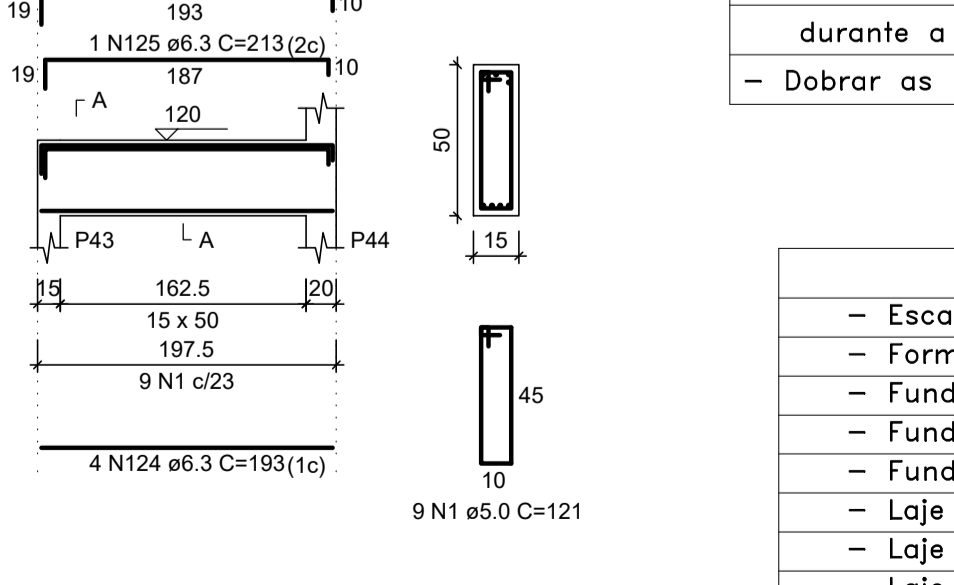
**SEÇÃO A-A**

ESC 1:25



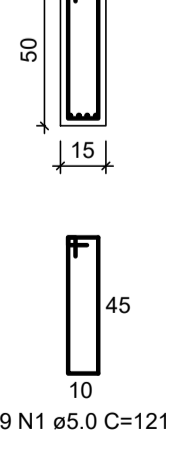
**VB12**

ESC 1:50



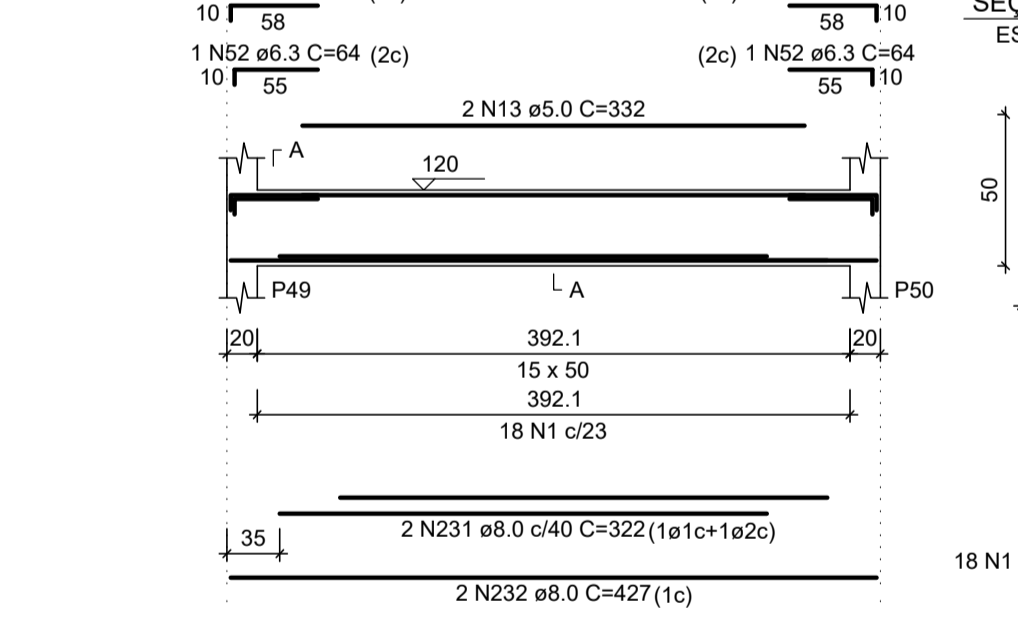
**SEÇÃO A-A**

ESC 1:25



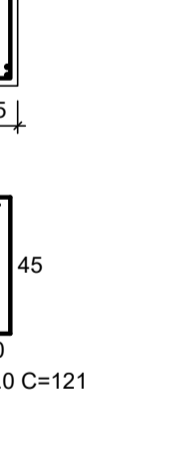
**VB15**

ESC 1:50



**SEÇÃO A-A**

ESC 1:25



**Notas**

- Executar passagens para tubulação de água, esgoto e eletricidade.
- Molhar bem as formas antes da concretagem.
- Conservar úmidas as peças concretadas durante a cura.
- Verificar a limpeza das formas e da estrutura em contato com o concreto.
- Usar apoios para manter a armadura negativa na posição durante a concretagem.
- Dobrar as barras conforme a NBR 6118.

**Tempo de desforma**

Table with 2 columns: Peça estrutural (Escada, Forma lateral de viga, Fundo de viga, etc.) and Tempo (07 dias, 01 dia, etc.).

**Armação Viga** Escala: 1:50

**ESPECIFICAÇÕES**

Table with 4 columns: Carga, Concreto, Aços, and Execução. Details material and execution requirements.

**PROJETO ESTRUTURAL** Prancha 14/30

Obra: Câmara Municipal de Fazenda Rio Grande
Local: Rua Farid Stephens, 173 - Bairro Pioneiros - Fazenda Rio Grande - Pr

PROPRIETÁRIO: Câmara Municipal de Fazenda Rio Grande

Referência: BALDRAME: Armação 02/04

Data: 07/02/2019
Projeto: Eng. Civil - Adelson Luiz Klem
Escala: Indicada
CREA - MS 1.064 / D. Vito 64069 - Pr